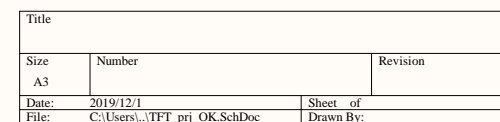


A

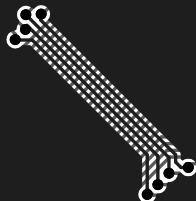
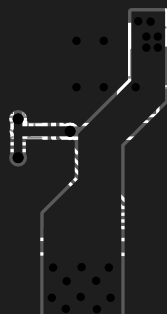


C

D



2
1
36
35



Comment	Description	Designator	Footprint	LibRef	Quantity
104	Capacitor, 15PF,± 5%,50V,COG,0402, RoHS, 15PF,± 5%,50V,COG,0402, RoHS, 15PF,± 5%,50V,COG,0402, RoHS, 15PF,± 5%,50V,COG,0402, RoHS, 15PF,± 5%,50V,COG,0402, RoHS	C1, C3, C4, C11, C14, C15	0603C	Cap, 1.02.17.0005, 1.02.17.0005, 1.02.17.0005, 1.02.17.0005, 1.02.17.0005	6
106	15PF,± 5%,50V,COG,0402, RoHS	C2, C6, C13, C17	1206	1.02.17.0005	4
106/DNI	15PF,± 5%,50V,COG,0402, RoHS	C5, C8	0805C	1.02.17.0005	2
105	15PF,± 5%,50V,COG,0402, RoHS	C7	0805C	1.02.17.0005	1
104/DNI	15PF,± 5%,50V,COG,0402, RoHS	C9, C10	0603C	1.02.17.0005	2
106	15PF,± 5%,50V,COG,0402, RoHS	C12	0805C	1.02.17.0005	1
105	15PF,± 5%,50V,COG,0402, RoHS	C16	1206	1.02.17.0005	1
SS34	Default Diode	D1	DO-214AC-1	Diode	1
RES		GND1, GND2, GND3, GND4	定位孔	RES	4
FPC_40		J1	FPC-TOP40	h_40	1
h_40		J2	FPC-TOP40	h_40	1
Header 8	Header, 8-Pin	J3	CTOUCH_6	Header 8	1
CDRH3D16-220	Inductor	L1	3*3mm贴片线圈	Inductor	1
Header 18X2	Header, 18-Pin, Dual row	P1	HDR2X18	Header 18X2	1
10K	Resistor	R1, R2, R5, R15	0603R	Res1	4
10K/DNI	Resistor	R3, R13, R14	0603R	Res1	3
1K	Resistor	R4	0603R	Res1	1
100K	Resistor	R6	0603R	Res1	1
4.7K	Resistor	R7, R10	0603R	Res1	2
15R	Resistor	R8, R11	0603R	Res1	2
15R/DNI	Resistor	R9	0603R	Res1	1
100K/DNI	Resistor	R12	0603R	Res1	1
33R		RN1, RN2, RN3, RN4, RN5, RN6, RN7, RN9	0603X4排阻	RES_PACKET4	8
33R/DNI		RN8	0603X4排阻	RES_PACKET4	1
200mV		TP1	TEST PAD	TestPoint	1
cat4139		U1	SOT23-5	cat	1
XPT2046/DNI		U2	TSSOP-16	TSC204	1
AMS1117-3.3		U3	SOT-223	AMS1117	1