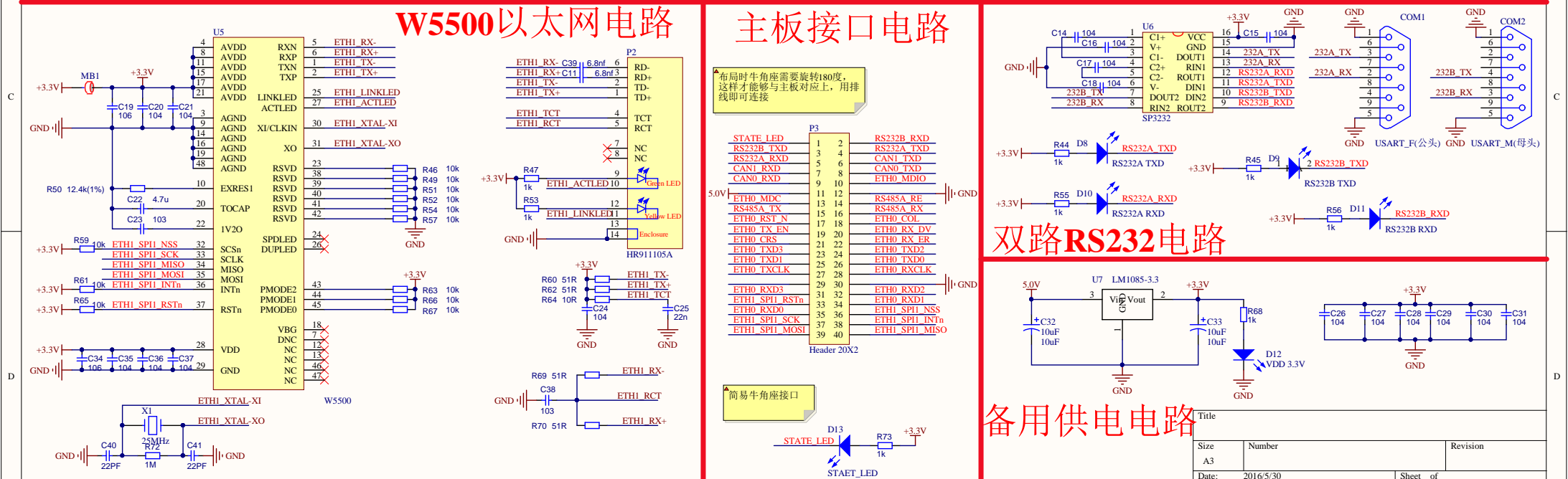
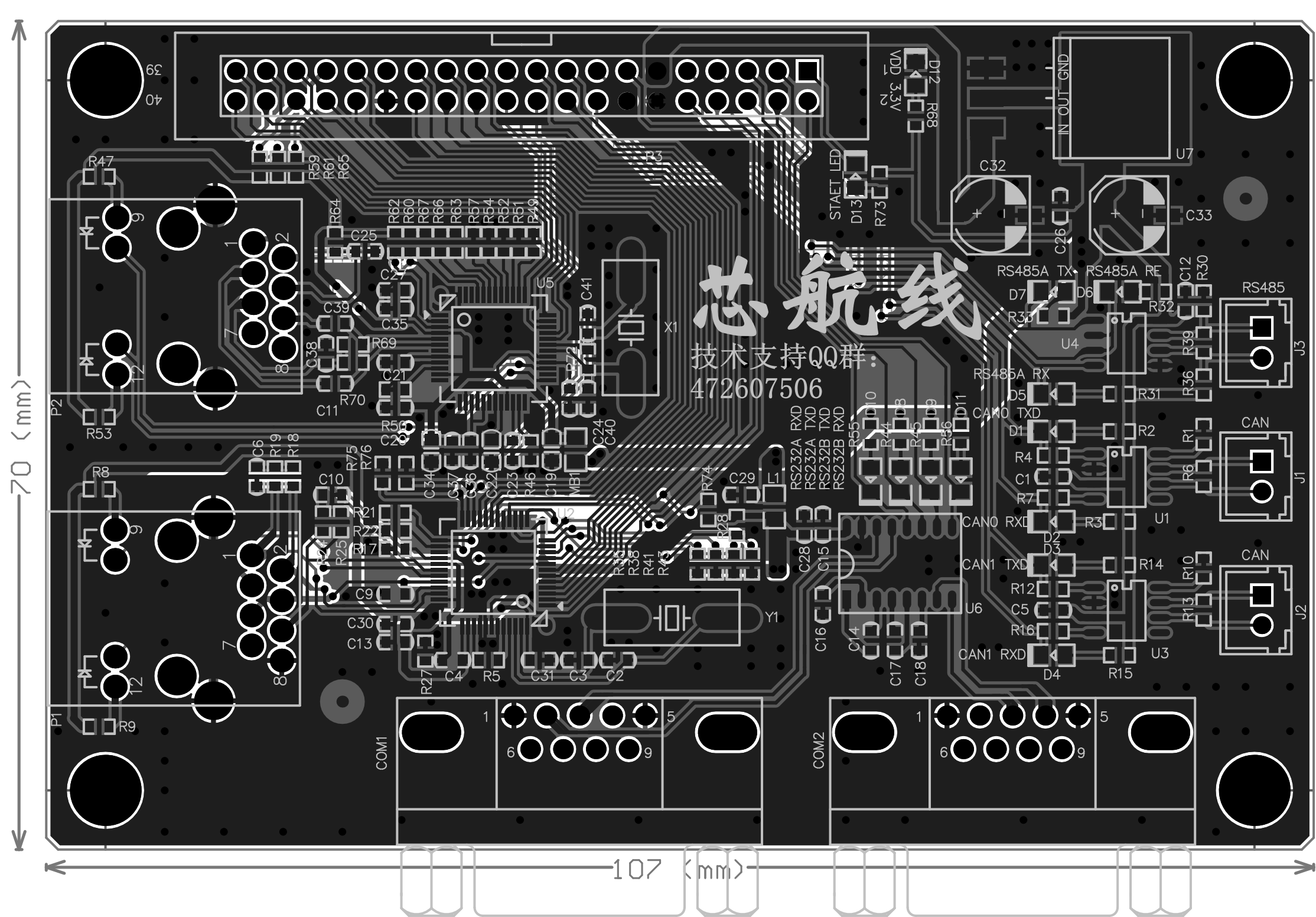


RTL8201以太网电路^{GND}



备用供电电路

Title		
Size A3	Number	Revision
Date: File:	2016/5/30 G:\XiaoMeige_fpga_System\Internet	Sheet of 24 Tehran Univ



Comment	Description	Designator	Footprint	LibRef	Quantity
104	贴片电容, 贴片电容, 贴片电容, 贴片电容, Capacitor, 贴片电容, 贴片电容, 贴片电容, 贴片电容, 贴片电容, 贴片电容, 贴片电容, 贴片电容, 贴片电容, 贴片电容, 贴片电容	C1, C5, C6, C12, C13, C14, C15, C16, C17, C18, C20, C21, C24, C26, C27, C28, C29, C30, C31, C35, C36, C37	0603C	C, C, C, C, CAP, C, C, C, C, C, C, C, C, C, C, C, C, C	22
22p	Capacitor	C2, C3	0603C	CAP	2
104	Capacitor	C4, C9	C0603	CAP	2
103	贴片电容	C10, C23, C38	0603C	C	3
6.8nf	贴片电容	C11, C39	0603C	C	2
106	贴片电容	C19, C34	0805C	C	2
4.7u	贴片电容	C22	0805C	C	1
22n	贴片电容	C25	0603C	C	1
10uF	Polarized Capacitor (Radial)	C32, C33	6x5mm水桶电容	Cap Pol1	2
22PF	贴片电容	C40, C41	0603C	C	2
USART_F(公头)		COM1	DB9 公 90°	DB9	1
USART_M(母头)		COM2	DB9 公 90°	DB9	1
CAN0 TXD		D1	0805 LED	LED	1
CAN0 RXD		D2	0805 LED	LED	1
CAN1 TXD		D3	0805 LED	LED	1
CAN1 RXD		D4	0805 LED	LED	1
RS485A RX		D5	0805 LED	LED	1
RS485A RE		D6	0805 LED	LED	1
RS485A TX		D7	0805 LED	LED	1
RS232A TXD		D8	0805 LED	LED	1
RS232B TXD		D9	0805 LED	LED	1
RS232A RXD		D10	0805 LED	LED	1
RS232B RXD		D11	0805 LED	LED	1
VDD 3.3V		D12	0805 LED	LED	1
STAET_LED		D13	0805 LED	LED	1
CAN		J1, J2	2.54mm白色针座	HEAD2	2
RS485		J3	2.54mm白色针座	HEAD2	1
10UH		L1	0805	INDUCTOR	1
0805-BLM21P	Magnetic Bead	MB1	0805	Magnetic Bead	1
HR911105A	RJ45座, 带隔离变压器	P1, P2	RJ45-LED(HR911105A)	RJ45	2
Header 20X2	Header, 20-Pin, Dual row	P3	2.54mm 简牛连接器	Header 20X2	1
0R		R1, R4, R7, R10, R12, R16	0603	R	6
1k		R2, R3, R8, R9, R14, R15, R31, R32, R33, R44, R45, R47, R53, R55, R56, R68, R73	0603	R	17
4.7K		R5, R21, R22, R28, R35, R38, R41, R43	0603	RES2	8
120R		R6, R13, R39	0603	R	3
6.2K/1%		R17	0603	RES2	1
51R		R18, R19, R24, R25, R60, R62, R69, R70	0603	R	8
0		R27	0603	RES2	1
360R		R30, R36	0603	R	2
10k		R46, R49, R51, R52, R54, R57, R59, R61, R63, R65, R66, R67	0603	R	12
12.4k(1%)		R50	0603	R	1
10R		R64	0603	R	1
1M		R72	0603	R	1
10K		R74, R76	0603C	RES2	2
1K		R75	0603C	RES2	1
MCP2551		U1, U3	SOP-8-1	SN65HVD230D	2
RTL8201		U2	QFP48	IP101	1
SP3485		U4	SOP-8-1	MAX3485	1
W5500	TCP/IP嵌入式以太网控制器, SPI接口	U5	QFP48	W5500	1
SP3232		U6	sop16	MAX3232	1
LM1085-3.3		U7	D2PAK/A	AMS1117	1
25MHz	Crystal	X1, Y1	49S-SMT	CRYSTAL	2